

Introduction

The publication series Planning Statistics was established in 1986. Its main objective is to monitor the implementation of the Local Government (Planning and Development) Acts 1963 - 1999. Most of the statistics relate to development control procedures (planning applications, appeals, fees, enforcement, etc.) and provide an up-to-date picture of the current situation as well as the trends emerging in relation to the operation of the physical planning system as a whole.

The current edition takes 1994 as its starting point and refers the reader to earlier editions for information prior to that date. Table 1, which gives overall trends from 1977 to date, has been retained.

The Planning Statistics Quarterly has been available since the beginning of 1990. It provides a breakdown of basic information on planning applications, decisions, refusals and deferrals by individual authority. Since 1990, information (in particular, Tables 2 and 3) is presented in the Annual Statistics by Area, an Area being a county authority and all other authorities within that county but excluding County Borough Councils.

Most of the figures presented here are based on information submitted by planning authorities either quarterly or annually to the Department of the Environment. The accuracy of the figures is dependent on the accuracy of the data submitted by each planning authority. Where discrepancies were noted (for example, in comparing aggregated quarterly returns with annual returns) these were resolved, where possible, by further communication with the relevant authorities. Minor discrepancies, where they remain unresolved, have been noted in individual tables.

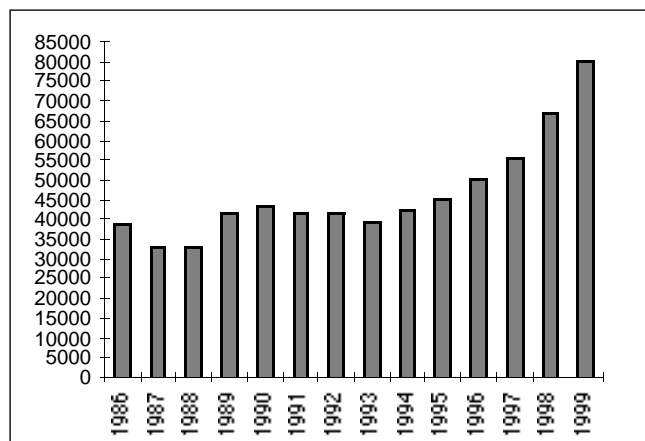
In calculating 'number of permissions', 'number of refusals', 'number of enforcement cases' and 'number of convictions' it should be borne in mind that the total number of refusals for one year could refer to applications from the previous year; similarly a period of more than one year could elapse between the initiation of an enforcement order and a possible conviction. In making comparisons between the 'deferral rate' for 1991 and subsequent years and years prior

to 1991, it should be noted that since 1990 the 'deferral rate' includes those cases deferred with the written consent of the applicant. In years prior to 1990 only cases arising from requests for additional information were taken into account.

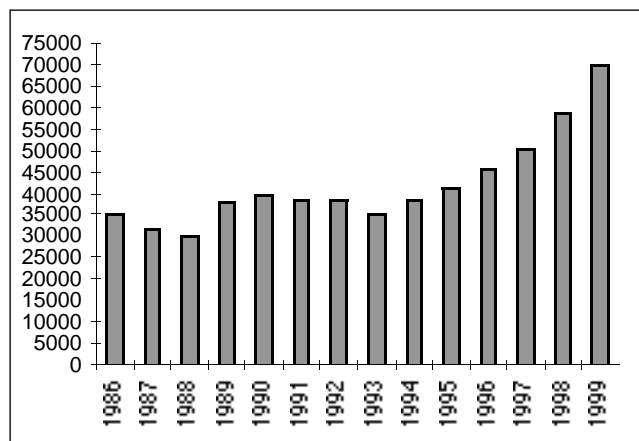
The tables have been grouped in four sections. The first two sections, 'Planning Applications' and 'Enforcement' deal with the development control system. The third section, 'Fees and Administration', covers the administrative aspects of the planning system, including staffing and resources, while the final section provides statistics on the use of various procedures in the Planning Acts.

A short section of text precedes each table or set of tables. Deficiencies in the statistics that may affect the validity or interpretation are pointed out in these paragraphs. In addition, some interpretation of the data is provided where relevant. However, the main purpose of this publication is to provide a set of basic planning statistics.

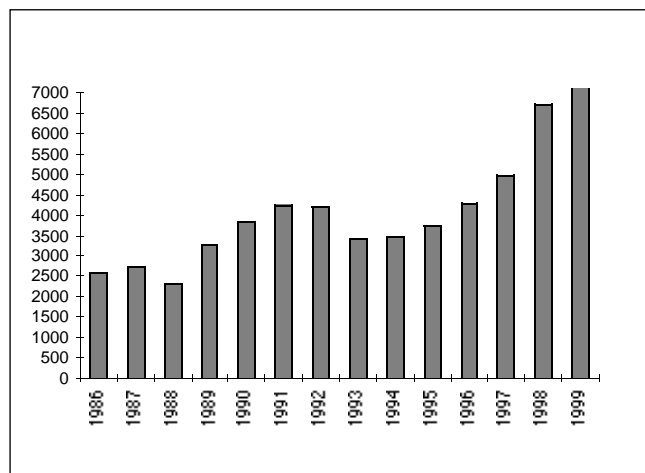
Figure 1: Planning Applications, Decisions, Refusals & Appeals



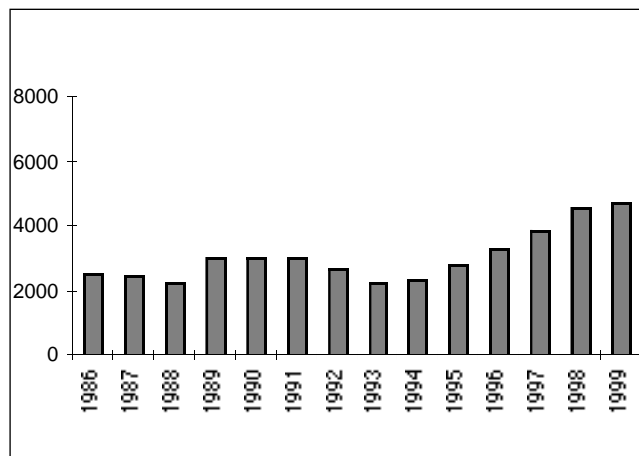
APPLICATIONS



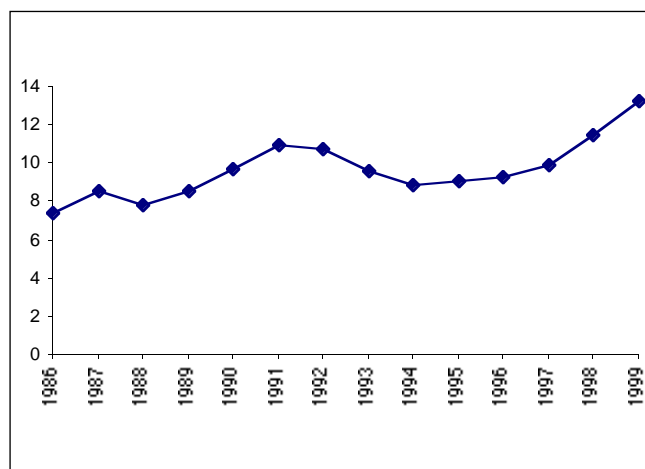
DECISIONS



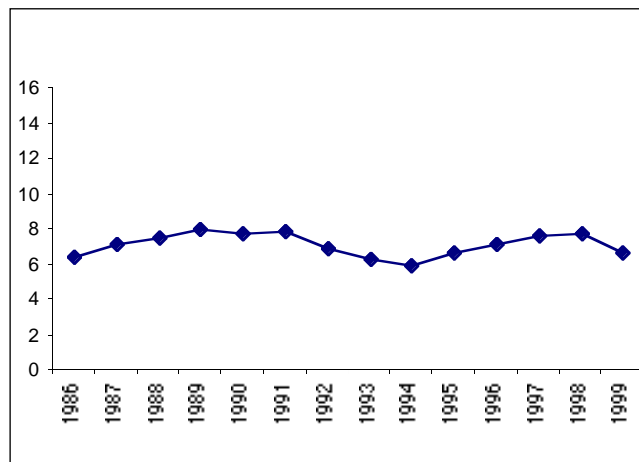
REFUSALS



APPEALS



REFUSAL RATE
(refusals as % of decisions)



APPEAL RATE
(appeals as % of decisions)

I Planning Applications

Tables 1, 2, 3 and 4

In the ten year period from 1988 to 1998 the number of planning applications made to local authorities doubled.

Between 1996 and 1997 there was an increase of ten per cent in the number of applications for planning permission received by Local Authorities. There was a further increase of twenty per cent from 1997 to 1998. The increase for 1999 over 1998 was almost twenty per cent.

Since 1982, permissions for which development had not taken place within five years become invalid. This probably had the effect of reducing the number of 'speculative' (and perhaps not genuine) applications. There was a further structural change during 1983 when planning fees were introduced for the first time.

In the subsequent years up to 1993 the figures fluctuated between thirty three thousand and just over forty thousand.

Since 1994 there has been a constant rise in the figures giving a cumulative increase of almost ninety per cent in the six year period.

Table 4 gives the number of refusals and the (so-called) 'refusal rates'. The percentage of planning decisions that consist of a refusal (the refusal rate) had shown a consistent decline from 15.1 per cent in 1981 to 7.4 per cent in 1986. Since then, apart from 1988, the rate has fluctuated between 8 and 11 per cent. The rate for 1998 was 11.5 per cent and this year the rate increased to 13.3 per cent.

The refusal rate is not an indicator of the proportion of applications that end up as refusals, nor should it be regarded as an indicator of the 'efficiency' or 'commitment' of any individual planning authority. Higher refusal rates might be expected, for example, in areas of high amenity value or in areas under intensive pressures for speculative development.

Some of the above trends are graphically presented in Figure 1.

Table 1: Planning Applications, Decisions and Refusals

Year	Planning applications	Planning decisions	Refusals	Refusal rate ¹
1977	44 691	40 873	4 673	11.4
1978	54 223	46 655	5 636	12.1
1979	57 060	55 062	6 872	12.5
1980	50 138	47 207	6 162	13.1
1981	53 890	48 367	7 318	15.1
1982	48 855	48 234	7 242	15.0
1983	39 569	37 290	4 890	13.1
1984	33 018	31 145	3 117	10.0
1985	33 649	31 264	2 992	9.6
1986	38 971	35 447	2 624	7.4
1987	33 472	31 988	2 742	8.6
1988	33 564	30 305	2 350	7.8
1989	41 924	38 018	3 293	8.6
1990	43 378	39 698	3 866	9.7
1991	41 996	38 450	4 234	11.0
1992	41 711	38 785	4 197	10.8
1993	39 486	35 539	3 428	9.6
1994	42 318	38 849	3 456	8.9
1995	45 261	41 282	3 773	9.1
1996	50 732	46 015	4 278	9.3
1997	55 929	50 427	5 008	9.9
1998	67 075	58 634	6 730	11.5
1999	80 261	69 869	9 274	13.3

Note 1: Number of decisions to refuse permission as a percentage of the total number of decisions

Table 2: Planning Applications by area

Area	1994	1995	1996	1997	1998	1999	(%) Change '98 to '99
Carlow	528	559	623	637	810	985	21.6
Cavan	814	823	903	991	1 293	1 696	31.2
Clare	1 438	1 483	1 831	1 957	2 342	2 842	21.3
Cork	4 375	4 828	5 227	5 572	6 227	7 717	23.9
Donegal	2140	2 222	2 520	2 831	3 652	5 520	51.2
Dun Laoghaire/Rathdown	1 477	1 375	1 683	1 851	2 176	2 335	7.3
Fingal	1 355	1 376	1 633	1 815	2 088	2 520	20.7
Galway	2 440	2 615	3 160	3 833	4 886	5 588	14.4
Kerry	2 309	2 478	2 811	3 095	3 638	4 117	13.2
Kildare	1 588	1 589	1 882	2 060	2 574	2 618	1.7
Kilkenny	1 098	1 205	1 277	1 355	1 531	2 079	35.8
Laois	696	730	814	812	1 153	1 504	30.4
Leitrim	394	402	427	575	729	922	26.5
Limerick	1 401	1 524	1 794	1 899	2 133	2 639	23.7
Longford	446	524	524	498	557	813	46.0
Louth	1 237	1 406	1543	1 592	1 897	2 395	26.3
Mayo	1 688	1 981	2 409	2 679	3 377	3 618	7.1
Meath	1 418	1 531	1 654	2 021	2 442	2 767	13.3
Monaghan	846	877	925	1 040	1 083	1 315	21.4
Offaly	740	779	864	979	1 195	1 678	40.4
Roscommon	743	824	885	986	1 258	1 479	17.6
Sligo	755	882	942	946	1 172	1 309	11.7
South Dublin	991	1 118	1 249	1 198	1 651	1 758	6.5
Tipperary NR	754	879	900	1 028	1 216	1 609	32.3
Tipperary SR	991	1 028	1 070	1 146	1 331	1 707	28.2
Waterford	806	845	898	1 053	1 302	1 496	14.9
Westmeath	848	880	1 135	1 339	1 532	1 895	23.7
Wexford	2 010	2 006	2 207	2 451	3 146	4 097	30.2
Wicklow	1 480	1 479	1 541	1 864	2 156	2 295	6.4
Sub-total	37 836	40 253	45 331	50 106	60547	73 313	21.1
Cork	725	803	796	891	982	1 055	7.4
Dublin	2 367	2 698	2 945	3 248	3 782	4 064	7.5
Galway	674	761	851	855	912	864	5.3
Limerick	347	394	408	431	463	452	(2.4)
Waterford	369	352	401	401	389	513	31.9
Sub-total	4 482	5 008	5 401	5 826	6 528	6 948	6.4
Total	42 318	45 261	50 732	55 929	67 075	80 261	19.7

Table 3: Planning Decisions by Area

Area	1994	1995	1996	1997	1998	1999	% Change '98 to '99
Carlow	421	524	578	591	680	862	26.8
Cavan	741	749	860	939	1 224	1482	21.1
Clare	1 267	1 275	1 516	1 658	1 914	2 356	23.1
Cork	4 013	4 520	4 870	5 113	5 391	6 736	24.9
Donegal	2 191	1 998	2 320	2 476	3 238	4 584	41.6
Dun Laoghaire/Rathdown	1 432	1 330	1 544	1 777	2 073	2 169	4.6
Fingal	1 250	1 303	1 486	1 673	2 003	2 382	18.9
Galway	2 410	2 460	2 969	3 371	4 471	4 750	6.2
Kerry	1 873	2 095	2 668	2 921	3 298	3 756	13.9
Kildare	1 450	1 600	1 612	1 727	1 917	2 264	18.1
Kilkenny	982	1 129	1 100	1 303	1 336	1 753	31.2
Laois	649	642	725	759	991	1 304	31.6
Leitrim	361	385	451	492	577	844	46.3
Limerick	1 295	1 411	1 605	1 703	1 859	2 327	25.2
Longford	409	481	443	482	476	637	33.8
Louth	1 096	1 245	1 310	1 425	1 552	1 941	25.1
Mayo	1 655	1 698	2 010	2 247	2 721	2 895	6.4
Meath	1 288	1 418	1 507	1 711	2 168	2 397	10.6
Monaghan	766	759	833	936	914	1 112	21.7
Offaly	641	692	715	851	963	1 412	46.6
Roscommon	667	711	750	846	1 047	1 250	19.4
Sligo	698	757	798	787	1 003	1 125	12.2
South Dublin	935	1 065	1 160	1 409	1 509	1 638	8.5
Tipperary NR	710	851	852	987	1 160	1 427	23.0
Tipperary SR	904	935	1 008	1 053	1 200	1 536	28.0
Waterford	684	759	834	978	1 184	1 319	11.4
Westmeath	770	788	1 057	1 192	1 354	1 627	20.2
Wexford	1 744	1 874	2 025	2 104	2 798	3 697	32.1
Wicklow	1 335	1 349	1 382	1 586	1 802	1 932	7.2
Sub-total	34 647	36 803	40 988	45 097	52 823	63 514	20.2
Cork	683	744	781	808	911	970	6.5
Dublin	2 118	2 377	2 634	3 075	3 429	3 825	11.5
Galway	708	666	844	658	698	660	(5.4)
Limerick	334	369	407	406	397	448	12.8
Waterford	359	323	361	383	376	452	20.2
Sub-total	4 102	4 202	5 027	5 330	5 811	5 355	9.4
Total	38 849	41 282	46 015	50 427	58 634	69 869	19.2

Table 4: Refusals and Refusal Rate by Area

Area	1994		1995		1996	
	Refusals	Rate	Refusals	Rate	Refusals	Rate
Carlow	14	3.3	13	2.5	15	2.6
Cavan	20	2.7	32	4.3	39	4.5
Clare	57	4.5	33	2.6	40	2.6
Cork	367	9.1	445	9.8	404	8.3
Donegal	137	6.3	97	4.9	98	4.2
Dun Laoghaire/Rathdown	161	11.2	169	12.7	214	13.9
Fingal	218	17.4	236	18.1	269	18.1
Galway	310	12.9	286	11.6	336	11.3
Kerry	68	3.6	95	4.5	160	6.0
Kidare	234	16.1	260	16.3	274	17.0
Kilkenny	60	6.1	75	6.6	96	8.7
Laois	11	1.7	38	5.9	48	6.6
Leitrim	11	3.0	8	2.1	17	3.8
Limerick	36	2.8	50	3.5	50	3.1
Longford	27	6.6	46	9.6	44	9.9
Louth	120	10.9	124	10	97	7.4
Mayo	40	2.4	53	3.1	83	4.1
Meath	173	13.4	170	12	219	14.5
Monaghan	59	7.7	51	6.7	103	12.4
Offaly	43	6.7	85	12.3	68	9.5
Roscommon	21	3.1	46	6.5	36	4.8
Sligo	73	10.5	79	10.4	63	7.9
South Dublin	90	9.6	105	9.9	140	12.1
Tipperary NR	33	4.6	38	4.5	35	4.1
Tipperary SR	33	3.7	37	4	32	3.2
Waterford	34	5.0	40	5.3	46	5.5
Westmeath	60	7.8	56	7.1	65	6.1
Wexford	241	13.8	209	11.2	255	12.6
Wicklow	215	16.1	197	14.6	228	16.5
Sub-total	2 966	8.6	3 173	8.6	3 574	8.7
Cork	76	11.1	81	10.9	77	9.9
Dublin	324	15.3	392	16.5	414	15.7
Galway	60	8.5	85	12.8	143	16.9
Limerick	18	5.4	27	7.3	46	11.3
Waterford	12	3.3	15	4.6	24	6.6
Sub-total	490	11.7	600	13.4	704	14.0
Total	3 456	8.9	3 773	9.1	4 278	9.3

Table 4: Refusals and Refusal Rate by Area (cont'd)

Area	1997		1998		1999		Rate Change from 1998 to 1999
	Refusals	Rate	Refusals	Rate	Refusals	Rate	
Carlow	24	4.1	40	5.9	72	8.4	2.5
Cavan	41	4.4	56	4.6	87	5.9	1.3
Clare	92	5.5	104	5.4	105	4.5	(0.9)
Cork	447	8.7	608	11.3	889	13.2	1.9
Donegal	153	6.2	353	10.9	792	17.3	6.4
Dun Laoghaire/Rathdown	196	11.0	261	12.6	382	17.6	5.0
Fingal	292	17.5	444	22.2	538	22.6	0.4
Galway	401	11.9	583	13.0	607	12.8	(0.2)
Kerry	225	7.7	259	7.9	438	11.7	3.8
Kildare	227	13.1	194	10.1	258	11.4	1.3
Kilkenny	146	11.2	190	14.2	232	13.2	(1.0)
Laois	59	7.8	104	10.5	244	18.7	8.2
Leitrim	30	6.1	44	7.6	61	7.2	(0.4)
Limerick	92	5.4	135	7.3	251	10.8	3.5
Longford	43	8.9	59	12.4	68	10.7	(1.7)
Louth	103	7.2	135	8.7	134	6.9	(1.8)
Mayo	132	5.9	152	5.6	331	11.4	5.8
Meath	322	18.8	555	25.6	551	23.0	(2.6)
Monaghan	98	10.5	92	10.1	101	9.1	(1.1)
Offaly	96	11.3	128	13.3	243	17.2	3.9
Roscommon	46	5.4	81	7.7	113	9.0	1.3
Sligo	56	7.1	84	8.4	100	8.9	0.5
South Dublin	217	15.4	246	16.3	334	20.4	4.1
Tipperary NR	62	6.3	117	10.1	175	12.3	2.2
Tipperary SR	42	4.0	53	4.4	95	6.2	1.8
Waterford	62	6.3	81	6.8	107	8.1	1.3
Westmeath	76	6.4	97	7.2	202	12.4	5.2
Wexford	228	10.8	341	12.2	603	16.3	4.1
Wicklow	273	17.2	328	18.2	357	18.5	0.3
Sub-total	4 281	9.5	5 924	11.3	8 470	13.3	2.0
Cork	78	9.7	103	11.3	129	13.3	2.0
Dublin	461	15.0	522	15.2	496	13.0	(2.2)
Galway	124	18.8	100	14.3	95	14.4	0.1
Limerick	434	8.4	57	14.4	43	9.6	(4.8)
Waterford	30	7.8	24	6.4	41	9.1	2.7
Sub-total	727	13.6	806	13.9	804	12.7	(1.2)
Total	5 008	9.9	6 730	11.5	9 274	13.3	1.8

Tables 5, 6, 7 and 8

In 1999, 4,706 planning decisions were the subject of an appeal to An Bord Pleanála - an increase of 3.9% over the previous year. The figure does not include reactivated appeals. A considerable number of appeals - approximately 20% of the total - were disposed of without a formal decision (withdrawn, invalid, etc.). In 1999 the number of formal decisions amounted to 3,697

Table 8 (which is obtained in full from the annual report of An Bord Pleanála) shows the breakdown of appeal decisions in three categories: reversed, varied and confirmed. Almost one in four appeals leads to a reversal of the local authority decision. This information is not available for individual authorities.

Table 5: Planning Decisions and Appeals¹

Year	Planning decisions	Appeals made	Appeal decisions	Appeals made as percentage of planning decisions
1988	30 305	2 257	1 955	7.5
1989	38 018	3 043	1 811	8.0
1990	39 698	3 038	2 732	7.7
1991	38 450	3 050	2 511	7.9
1992	38 785	2 671	2 473	6.9
1993	35 539	2 249	2 033	6.3
1994	38 849	2 331	1 802	6.0
1995	41 282	2 777	2 064	6.7
1996	46 015	3 319	2 540	7.2
1997	50 427	3 845	2 902	7.6
1998	58 634	4 533	3 154	7.7
1999	69 869	4 706	3 697	6.7

Note 1: Source - An Bord Pleanála

Table 6: Planning Decisions and Appeals in 1999 by Area

Area	Planning Decisions	Appeals Made	Appeals made as % of Planning Decisions
Carlow	862	49	5.7
Cavan	1 482	50	3.4
Clare	2 356	107	4.5
Cork	6 736	431	6.4
Donegal	4 584	203	4.4
Dun Laoghaire/ Rathdown	2 169	334	15.4
Fingal	2 382	296	12.4
Galway	4 750	197	4.2
Kerry	3 756	188	5.0
Kildare	2 224	158	7.0
Kilkenny	1 753	85	4.9
Laois	1 304	80	6.1
Leitrim	844	35	4.2
Limerick	2 327	123	5.3
Longford	637	27	4.2
Louth	1 941	103	5.3
Mayo	2 895	162	5.6
Meath	2 397	135	5.6
Monaghan	1 112	36	3.2
Offaly	1 412	65	4.6
Roscommon	1 250	56	4.5
Sligo	1 125	54	4.8
South Dublin	1 638	190	11.6
Tipperary NR	1 427	106	7.4
Tipperary SR	1 536	63	4.1
Waterford	1 319	47	3.6
Westmeath	1 627	65	4.0
Wexford	3 697	135	3.7
Wicklow	1 932	218	11.3
Sub-total	63 514	3 798	6.0
Cork	970	93	9.6
Dublin	3 825	618	16.2
Galway	660	128	19.4
Limerick	448	40	9.0
Waterford	452	29	6.4
Sub-total	6 355	908	14.3
Total	69 869	4 706	6.7

Table 7: Appeals Made by Area

Area	1994	1995	1996	1997	1998	1999
Carlow	20	16	13	29	38	49
Cavan	16	18	25	35	54	50
Clare	45	40	60	97	105	107
Cork	167	262	299	327	387	431
Donegal	53	61	81	91	124	203
Dun Laoghaire/Rathdown	184	184	236	264	309	334
Fingal	170	192	253	229	281	296
Galway	102	106	154	166	224	197
Kerry	76	92	148	193	179	188
Kildare	117	149	135	134	144	158
Kilkenny	35	45	66	79	79	85
Laois	13	20	29	34	50	80
Leitrim	13	10	12	19	31	35
Limerick	29	24	47	78	96	123
Longford	22	36	15	28	34	27
Louth	62	81	90	100	106	103
Mayo	50	71	94	135	161	162
Meath	63	74	102	117	156	135
Monaghan	42	45	43	39	44	36
Offaly	19	29	34	36	51	65
Roscommon	19	31	35	45	53	56
Sligo	23	40	41	38	42	54
South Dublin	108	131	140	154	191	190
Tipperary NR	31	38	38	51	81	106
Tipperary SR	21	27	35	43	53	63
Waterford	29	32	30	47	65	47
Westmeath	32	49	51	74	71	65
Wexford	75	57	89	89	116	135
Wicklow	135	145	161	192	226	218
Sub-total	1 771	2 105	2 556	2 973	3551	3798
Cork	75	91	74	88	118	93
Dublin	378	452	526	612	662	618
Galway	80	80	110	106	139	128
Limerick	12	24	31	35	31	40
Waterford	15	25	22	31	32	29
Sub-total	560	672	763	872	982	908
Total	2 331	2 777	3 319	3 845	4533	4706

Source: An Bord Pleanála

Table 8: Consistency of Planning Decisions in Appeal Cases (Section 26)

Year	Decision of Planning Authority		
	Reversed	Varied	Confirmed
1991	615 (24.5)	762 (30.3)	1 134 (45.2)
1992	598 (24.2)	676 (27.3)	1 199 (48.5)
1993	496 (24.4)	675 (33.2)	862 (42.4)
1994	418 (23.2)	652 (36.2)	732 (40.6)
1995	478 (23.2)	746 (36.1)	840 (40.7)
1996	582 (22.9)	915 (38.0)	1 043 (41.1)
1997	659 (22.9)	992 (34.5)	1 222 (42.5)
1998	664 (21.5)	1 143 (37.1)	1 276 (41.4)
1999	895 (24.6)	1 212 (33.3)	1 530 (42.1)

Source: An Bord Pleanála

Tables 9, 10, 11 and 12

Over the past ten years applications for outline permission accounted for about one in ten of all applications. This year these applications have increased to just over 15% of the total. It should be noted that the use of outline applications is relatively frequent in some authorities while the average for the 5 County Borough Councils is 2.4%. The ratio of applications for approval to those for outline permissions is approximately 1:5. This would appear to indicate that little use is made of the provision in the Planning Act which enables an applicant who has obtained an outline permission to make that permission operational by the granting of an approval. It therefore appears likely that most outlines are followed up by an application for permission (rather than approval) or that they are not followed up at all.

Table 12 shows that the 'refusal rate' for outline permissions - at approximately 29% - is more than twice the average rate. The refusal rate for approvals is approximately one eighth of the average rate. It should also be noted that while outline permissions deferred are 19% of all deferrals (Table 13), more than 42% of all outline applications are deferred.

Table 9: Planning Applications by Type of Application

Year	Type of Application			Total
	Outline Perm	Approval	Permission	
1991	4 486 (10.7)	773 (1.8)	36 737 (87.5)	41 996
1992	4 510 (10.8)	799 (1.9)	36 402 (87.3)	41 711
1993	4 048 (10.3)	822 (2.0)	34 616 (87.7)	39 486
1994	3 910 (9.2)	1 023 (2.4)	37 394 (88.4)	42 318
1995	4 225 (9.3)	1 052 (2.3)	39 984 (88.3)	45 261
1996	4 556 (9.0)	1 228 (2.4)	44 948 (88.6)	50 732
1997	5 877 (10.5)	1 431 (2.6)	48 261 (86.9)	55 929
1998	8 068 (12.0)	1 932 (2.9)	57 075 (85.1)	67 075
1999	12 206 (15.2)	2 494 (3.1)	65 561 (81.7)	80 261

Table 10: Planning Applications by Area and by Type 1999

Area	Outline	%	Approval	%	Perm'sn	%	Total
Carlow	161	16.3	24	2.4	800	81.2	985
Cavan	325	19.2	56	3.3	1 315	77.5	1 696
Clare	609	21.4	122	4.3	2 111	74.3	2 842
Cork	1 285	16.7	131	1.7	6 301	81.7	7 717
Donegal	1 635	29.6	186	3.4	3 699	67.0	5 520
Dun Laoghaire/Rathdown	65	2.8	2	0.1	2 268	97.1	2 335
Fingal	102	4.0	22	0.9	2 396	95.1	2 520
Galway	1 189	21.3	303	5.4	4 096	73.3	5 588
Kerry	1 005	24.4	259	6.3	2 853	69.3	4 117
Kildare	139	5.3	30	1.1	2 449	93.5	2 618
Kilkenny	335	16.1	47	2.3	1 697	81.6	2 079
Laois	236	15.7	71	4.7	1 197	79.6	1 504
Leitrim	217	23.5	31	3.4	674	73.1	922
Limerick	411	15.6	66	2.5	2 162	81.9	2 639
Longford	116	14.3	33	4.1	664	81.7	813
Louth	375	15.7	154	6.4	1 866	77.9	2 395
Mayo	616	17.0	94	2.6	2 908	80.4	3 618
Meath	108	3.9	25	0.9	2 634	95.2	2 767
Monaghan	273	20.8	47	3.6	995	75.7	1 315
Offaly	316	18.8	81	4.8	1 281	76.3	1 678
Roscommon	302	20.4	81	5.5	1 096	74.1	1 479
Sligo	170	13.0	32	2.4	1 107	84.6	1 309
South Dublin	51	2.9	10	0.6	1 697	96.5	1 758
Tipperary NR	344	21.4	84	5.2	1 181	73.4	1 609
Tipperary SR	357	20.9	92	5.4	1 258	73.7	1 707
Waterford	256	17.1	50	3.3	1 190	79.5	1 496
Westmeath	364	19.2	112	5.9	1 419	74.9	1 895
Wexford	565	13.8	169	4.1	3 363	82.1	4 097
Wicklow	115	5.0	17	0.7	2 163	94.2	2 295
Sub-total	12 042	16.4	2 431	3.3	58 840	80.3	73 313
Cork	21	2.0	9	0.9	1 025	97.2	1 055
Dublin	86	2.1	22	0.5	3 956	97.3	4 064
Galway	34	3.9	21	2.4	809	93.6	864
Limerick	7	1.5	0	0.0	445	98.5	452
Waterford	16	3.1	11	2.1	486	94.7	513
Subtotal	164	2.4	63	0.9	6 721	96.7	6 948
Total	12 206	15.2	2 494	3.1	65 561	81.7	80 261

Table 11: Planning Decisions by Type of Application

Year	Type of Application		Approval	Permission	Total		
	Outline Permission						
1991	3 842	(10.0)	664	(1.7)	33 942	(88.3)	38 448
1992	3 697	(9.5)	742	(1.9)	34 346	(88.6)	38 785
1993	3 299	(9.3)	681	(1.9)	31 559	(88.8)	35 539
1994	3 325	(8.6)	895	(2.3)	34 629	(89.1)	38 849
1995	3 539	(8.6)	942	(2.3)	36 801	(89.1)	41 282
1996	3 876	(8.4)	1 085	(2.4)	41 058	(89.2)	46 015
1997	4 741	(9.4)	1 295	(2.6)	44 390	(88.0)	50 426
1998	6 337	(10.8)	1 691	(2.9)	50 606	(86.3)	58 634
1999	9 512	(13.6)	2 190	(3.1)	58 167	(83.3)	69 869

Table 12: Refusals as a Percentage of Decisions by Type of Application

Year	Type of Application		Permission	All Types
	Outline Permission	Approval		
1991	29.6	2.7	9.1	11.0
1992	30.9	2.3	8.8	10.8
1993	27.7	2.2	7.9	9.6
1994	23.4	2.9	7.5	8.9
1995	24.3	2.3	7.9	9.1
1996	24.0	2.7	8.1	9.3
1997	24.9	2.6	8.5	9.9
1998	26.2	1.1	13.3	11.5
1999	28.5	1.7	11.2	13.3

Tables 13, 14 and 15

A decision on a planning application must be made by the planning authority within a period of two months. This period can be extended in two ways.

The first occurs when a planning authority requests additional information (S26 of the 1963 Act, Art. 33 of the 1994 Regulations). A second procedure, requiring the written consent of the applicant, allows the planning authority to extend the two-month period. This provision was introduced in the 1976 Act (Table 15).

Table 14 gives the total figures for both procedures. Table 15 gives the figures for the extension provision introduced in the 1976 Act.

In 1989 and in previous years deferred applications referred only to those arising from 'request for further information'. From 1990 onwards 'deferrals' also include cases dealt with under this second procedure. It should be noted that greater use is being made of this procedure every year. There was an increase of more than forty per cent between 1996 and 1997 and an increase of 136% from 1997 to 1998. Double counting is excluded.

Deferrals arising from the 1976 Act are increasing as a percentage of total deferrals: 1996: 14%; 1997:20%; 1998:24%.

Table 13: Applications Deferred by Type of Application

Year	Type of Application ¹						Total
	Outline Permission		Approval		Permission		
1991	1 786	(14.4)	155	(1.3)	10 444	(84.3)	12 798
1992	1 890	(15.2)	169	(1.4)	10 399	(83.5)	12 458
1993	1 651	(15.7)	218	(2.1)	8 651	(82.2)	10 520
1994	1 536	(13.6)	266	(2.4)	9 471	(84.0)	11 273
1995	1 628	(13.2)	239	(1.9)	10 432	(84.8)	12 299
1996	1 972	(13.3)	307	(2.1)	12 559	(84.6)	14 838
1997	2 438	(14.7)	351	(2.1)	13 816	(83.2)	16 605
1998	3 193	(15.4)	447	(2.2)	17 061	(82.4)	20 701
1999	5 179	(18.9)	660	(2.4)	21 613	(78.7)	27 452

Note 1: *The figures for the categories outline permission, approval and permission for 1991 underestimated the real figures and did not add up to the total number of deferred applications because of data missing for certain planning authorities.*

Table 14: Applications Deferred as Percentage of Applications ¹

Area	Deferred total 1998	Deferral rate	Deferred total 1999	Deferral rate	Change in rate '98 to '99
Carlow	286	35.3	375	38.1	2.8
Cavan	371	28.7	445	26.2	(2.5)
Clare	1 187	50.7	1 296	45.6	(5.1)
Cork	2 092	33.6	2 934	38.0	4.4
Donegal	1 105	30.3	1 619	29.3	(1.3)
Dun Laoghaire/Rathdown	377	17.3	401	17.2	(0.10)
Fingal	732	35.1	708	28.1	(7.0)
Galway	1 328	27.2	1 806	32.3	5.1
Kerry	956	26.3	1 009	24.5	(1.8)
Kildare	1 346	52.3	1 474	56.3	4.0
Kilkenny	466	30.4	750	36.1	5.7
Laois	460	39.9	555	36.9	(3.0)
Leitrim	183	25.1	250	27.1	2.0
Limerick	748	35.1	1 065	40.4	5.3
Longford	146	26.2	317	39.0	12.8
Louth	486	25.6	792	33.1	7.5
Mayo	881	26.1	1 659	45.9	19.8
Meath	683	28.0	920	33.2	5.2
Monaghan	315	29.1	505	38.4	9.3
Offaly	542	45.4	814	48.5	3.1
Roscommon	376	29.1	469	31.7	2.6
Sligo	502	42.8	405	30.9	(11.9)
South Dublin	169	10.2	770	43.8	33.6
Tipperary NR	289	23.8	557	34.6	10.8
Tipperary SR	164	12.3	298	17.5	5.2
Waterford	358	27.5	496	33.2	5.7
Westmeath	535	34.9	772	40.7	5.8
Wexford	1 123	35.7	1 460	35.6	(0.1)
Wicklow	705	32.7	885	38.6	5.9
Sub-total	18 911	31.2	25 806	35.2	4.0
Cork	163	16.6	182	17.3	0.7
Dublin	1 062	28.1	882	21.7	(6.4)
Galway	455	49.9	402	46.5	(3.4)
Limerick	59	12.7	73	16.2	3.5
Waterford	51	13.1	107	20.9	7.8
Sub-total	1 790	27.4	1 646	23.7	(3.7)
Total	20 701	30.9	27 452	34.2	3.3

Note 1: See text in introduction to table. This table should be read in conjunction with the following Table 15. The data in Table 15 are incorporated in the figures in this table.

Table 15: Applications where Consideration Time has been Extended (S26(4A) of 1963 Act as amended)

Area	1994	1995	1996	1997	1998	1999
Carlow	2	1	3	2	4	18
Cavan	22	7	6	6	5	16
Clare	91	17	148	115	134	214
Cork	250	327	428	489	417	606
Donegal	12	58	109	110	173	179
Dun Laoghaire/Rathdown	38	40	32	54	49	27
Fingal	147	95	103	333	132	708
Galway	147	164	142	255	339	505
Kerry	36	73	75	467	74	221
Kildare	43	49	54	227	541	856
Kilkenny	44	52	84	80	87	189
Laois	29	25	11	24	11	28
Leitrim	1	1	0	2	4	6
Limerick	42	52	54	32	74	130
Longford	10	23	2	12	14	6
Louth	41	40	62	89	145	201
Mayo	51	72	68	98	248	139
Meath	9	24	42	41	100	331
Monaghan	27	7	8	9	8	9
Offaly	2	4	9	7	32	52
Roscommon	7	3	8	18	56	111
Sligo	17	19	39	30	134	78
South Dublin	N/A	18	15	11	193	187
Tipperary NR	22	29	27	33	60	133
Tipperary SR	12	8	18	11	20	53
Waterford	4	2	7	17	14	21
Westmeath	24	10	12	127	430	161
Wexford	7	5	15	21	75	20
Wicklow	48	18	222	81	217	361
Sub-total	995	1 186	1 615	1854	4390	5566
Cork	78	N/A	51	113	63	47
Dublin	272	158	173	121	528	574
Galway	21	7	11	19	36	32
Limerick	1	0	10	12	11	17
Waterford	15	19	26	9	8	16
Sub-total	387	184	271	274	646	686
Total	1 382	1 370	1 886	2128	5 036	6252

Tables 16 and 17

Tables 16 and 17 give information on the use of procedures through which elected representatives can influence the planning control process: S4 of the City and County Management (Amendment) Act, 1955, and the procedure of material contravention of the development plan, as provided for in the 1976 Act.

While only limited use is made of these procedures overall, some authorities do use them to a considerable extent. The S4 procedure was used in 7 authorities. One county authority accounts for almost two thirds of the total usage.

By virtue of section 26(3)(c) of the 1963 Act, a section 4 motion which, if passed, would result in a material contravention of the development plan, lapses and the material contravention procedures come into operation. Accordingly, those section 4 motions which have been superseded by the material contravention procedures are now listed separately. They then appear on the Council agenda as material contraventions.

Sections 44 and 45 of the Local Government Act, 1991 introduced changes in both procedures from 7 June 1991. In both cases a decision to grant planning permission requires the vote of not less than three quarters of the members of the Council in favour. The reduction of approximately 42 per cent in 'S4 Motions' in 1992 as compared to 1991 did not continue into 1993 and there was little change in the numbers of 'S4 Motions' in 1994. 1995's figures for 'S4 Motions' showed an unprecedented reduction of 58.5 per cent, and this figures did not change substantially in 1996. There were only minor changes in the numbers of S4 on the agenda during 1997 and 1998. There was however an increase of over 50% (15 instances) in 1999. The increase in the number of 'material contraventions' was in the order of ten per cent.

Table 16 Applications where either S4 Procedure or the Procedure for Material Contravention of the Development Plan was followed

Procedure	1994	1995	1996	1997	1998	1999
- S4 Procedure						
• On Agenda	94	39	37	28	32	47
• Passed by Council	63	12	9	3	8	11
• Superseded by Material Contravention	34	16	18	18	20	22
- Material Contravention						
• Notice of Intention	109	84	95	106	142	156
• Passed by Council	92	74	82	88	122	138

Table 17: Applications where either S4 or Material Contravention Procedures were used

Area	SECTION 4 MOTIONS			MATERIAL CONTRAVENTIONS	
	Agenda	Passed	Superseded by Material Contravention	Agenda	Passed
Carlow	0	0	0	1	1
Cavan	0	0	0	0	0
Clare	0	0	0	3	2
Cork	0	0	0	3	2
Donegal	29	5	14	16	11
Dun Laoghaire/Rathdown	0	0	0	0	0
Fingal	0	0	0	0	0
Galway	0	0	0	19	19
Kerry	2	0	2	12	12
Kildare	0	0	0	9	9
Kilkenny	0	0	0	4	4
Laois	2	0	0	6	6
Leitrim	0	0	0	0	0
Limerick	0	0	0	0	0
Longford	0	0	0	0	0
Louth	1	0	1	7	5
Mayo	0	0	0	4	4
Meath	0	0	0	2	2
Monaghan	0	0	0	0	0
Offaly	0	0	0	1	1
Roscommon	0	0	0	1	1
Sligo	0	0	0	0	2
South Dublin	0	0	0	0	0
Tipperary Nr	1	0	0	2	1
Tipperary Sr	0	0	0	18	13
Waterford	0	0	0	1	1
Westmeath	0	0	0	17	15
Wexford	5	0	5	5	5
Wicklow	7	6	0	12	12
Subtotal	47	11	22	143	128
Cork	0	0	0	0	0
Dublin	0	0	0	0	0
Galway	0	0	0	4	3
Limerick	0	0	0	0	0
Waterford	0	0	0	9	7
Subtotal	0	0	0	13	10
Total	47	11	22	156	138

Tables 18, 18A and 19

Table 18 provides information on the type of development applied for in planning applications. It is derived from the information on planning fees and the land use categories that are defined in the Local Government (Planning & Development) Regulations, 1994. The 1994 Regulations give a slightly different fee class arrangement and there are some new classes not provided for in the 1984 Regulations. Table 18A, covering the years 1992 to 1994 is retained for comparison purposes.

Tables 18 and 19 provide data on the number of applications in each fee class. Small discrepancies may occur between the total number of applications in these tables and the actual number presented in Table 2. This can be for a number of reasons: certain applications are exempted from fees - there were 996 - other applications falling into different fee classes may have been counted more than once, and applications received in the earlier part of the year may have been withdrawn by year end.

In 1999 more than eight out of every ten applications were for residential development (class 1 and class 2 - dwelling houses and 'extensions').

Table 18: Planning Applications by Class of Development

Year	Class of development ¹															Total
	1	2	3	4	5	6	7	8	9	10	11	12	13	14	15	
1995	19845	12345	2617	110	6852	8	84	156	204	152	500	58	18	5	1927	44881
%	44.2	27.5	5.8	0.2	15.3	0.0	0.2	0.3	0.5	0.3	1.1	0.1	0.0	0.0	4.3	100.0
1996	23237	13950	2184	230	7524	12	51	182	213	161	632	109	11	4	1931	50431
%	46.08	27.66	4.33	0.46	14.92	0.02	0.10	0.36	0.42	0.32	1.25	0.22	0.02	0.01	3.83	100.0
1997	27 642	14 826	1 564	120	8 503	8	58	163	201	163	652	103	34	14	2 160	56 649
%	48.8	26.2	2.8	0.2	15.0	0.0	0.1	0.3	0.4	0.3	1.2	0.2	0.1	0.0	3.8	100.0
1998	35 832	16 618	1 178	219	9 076	8	88	163	229	163	564	131	92	10	2 324	66 557
%	53.8	25.0	1.8	0.3	13.6	0.0	0.1	0.2	0.3	0.2	0.9	0.2	0.1	0.0	3.5	100.0
1999	46 804	18 841	1 357	249	8 865	3	51	211	225	156	503	80	26	9	2 313	79 693
%	58.7	23.6	1.7	0.3	11.1	0.0	0.1	0.3	0.3	0.2	0.6	0.1	0.0	0.0	2.9	100.0

Table 18A: Planning Applications by Class of Development

Year	Class of development ²											Total
	1	2	3	4	5	6	7	8	9	10	11	
1992	18023	11193	1923	6960	73	196	137	178	697	55	1783	41218
%	43.7	27.2	4.7	16.9	0.2	0.5	0.3	0.4	1.7	0.1	4.2	100.0
1993	17469	10662	1733	6122	64	183	110	138	759	56	1559	38855
%	45.0	27.4	4.5	15.8	0.2	0.5	0.3	0.4	1.9	0.1	4.0	100.0
1994	19010	11676	2280	6237	159	175	97	138	668	52	1512	42011
%	45.3	27.8	5.4	14.9	0.4	0.4	0.2	0.3	1.6	0.1	3.6	100.0

- Notes:
1. As defined in Local Government (Planning and Development) Regulations, 1994. A small number of authorities did not provide a breakdown into fee classes. Consequently the total (see text in introduction) will not be equal to the sum of the fee classes.
 2. As defined in Local Government (Planning and Development) (Fees) Regulations, 1984

Table 19: Applications by Area and Class of Development 1999

Area	Class 1	Class 2	Class 3	Class 4	Class 5	Class 6	Class 7	Class 8
Carlow	607	213	25	4	90	0	0	0
Cavan	1 064	268	57	122	20	1	1	2
Clare	1 813	465	65	1	227	0	2	6
Cork	4 725	1 913	113	43	992	0	10	39
Donegal	4 276	646	38	6	399	0	2	18
Dun Laoghaire/Rathdown	471	1 440	1	0	275	0	0	4
Fingal	867	1 001	35	6	414	0	1	16
Galway	4 249	690	86	1	420	0	2	3
Kerry	3 028	534	85	1	354	0	3	14
Kildare	1 396	714	72	0	314	0	2	0
Kilkenny	1 206	418	91	8	166	0	2	1
Laois	997	278	37	0	163	0	0	0
Leitrim	629	182	20	0	72	0	1	0
Limerick	1 543	615	70	11	221	0	3	1
Longford	573	157	49	0	32	0	0	0
Louth	1 025	672	15	3	272	0	3	3
Mayo	2 948	397	20	0	272	0	1	2
Meath	1 353	826	72	24	316	0	3	5
Monaghan	829	178	41	0	159	0	0	1
Offaly	1 228	267	12	0	117	0	2	1
Roscommon	967	272	57	0	114	2	0	3
Sligo	751	222	13	0	75	0	1	2
South Dublin	421	787	5	2	368	0	2	12
Tipperary NR	992	300	66	5	117	0	0	1
Tipperary SR	1 077	308	64	0	242	0	0	1
Waterford	930	370	51	2	104	0	2	3
Westmeath	1 158	372	22	0	202	0	0	1
Wexford	2 957	635	59	5	304	0	6	9
Wicklow	1 260	707	16	5	307	0	0	4
Sub-total	45 331	15 847	1 357	249	7 128	3	49	152
Cork	203	434	0	0	304	0	0	9
Dublin	794	1 866	0	0	970	0	2	32
Galway	297	307	0	0	233	0	0	12
Limerick	68	203	0	0	89	0	0	1
Waterford	111	184	0	0	141	0	0	5
Sub-total	1 473	2 994	0	0	1 737	0	2	59
Total	46 804	18 841	1 357	249	8 865	3	51	211

Table 19: Applications by Area and Class of Development (Continued)

Area	Class 9	Class 10	Class 11	Class 12	Class 13	Class 14	Class 15	Total
Carlow	6	3	5	1	0	0	32	986
Cavan	2	1	4	0	0	0	47	1 589
Clare	1	4	5	6	0	1	73	2 669
Cork	53	22	33	9	4	0	320	8 276
Donegal	14	28	12	3	4	4	89	5 539
Dun Laoghaire/Rathdown	13	1	30	1	0	0	67	2 303
Fingal	14	0	27	3	0	0	134	2 520
Galway	0	1	6	4	0	0	80	5 542
Kerry	12	8	7	1	3	0	94	4 144
Kildare	0	8	16	5	0	0	79	2 606
Kilkenny	8	1	8	0	0	0	27	1 936
Laois	2	6	12	4	0	0	16	1 515
Leitrim	0	0	5	0	0	0	0	909
Limerick	12	0	4	1	0	0	76	2 548
Longford	0	2	3	0	1	0	34	851
Louth	3	5	13	6	1	0	70	2 091
Mayo	2	5	6	0	0	0	31	3 684
Meath	2	1	4	5	2	1	88	2 702
Monaghan	4	13	18	0	1	1	49	1 294
Offaly	0	5	4	1	0	0	49	1 686
Roscommon	0	2	0	6	0	0	59	1 482
Sligo	0	3	0	1	0	0	37	1 105
South Dublin	20	1	44	0	4	0	57	1 723
Tipperary NR	9	3	2	0	1	0	30	1 526
Tipperary SR	0	5	12	1	0	0	18	1 728
Waterford	0	0	4	13	0	0	43	1 522
Westmeath	0	4	5	1	0	0	81	1 846
Wexford	6	3	15	0	2	1	33	4 035
Wicklow	0	4	24	4	2	0	38	2 371
Sub-total	183	139	328	76	26	9	1 851	72 728
Cork	6	4	12	2	0	0	63	1 037
Dublin	31	5	114	1	0	0	231	4 046
Galway	4	4	26	0	0	0	55	938
Limerick	0	4	5	1	0	0	65	436
Waterford	1	0	18	0	0	0	48	508
Sub-total	42	17	175	4	0	0	462	6 965
Total	225	156	503	80	26	9	2 313	79 693

Tables 20 and 21

Tables 20 and 21 list the total amount of development contributions which planning authorities receive through the procedure of levying charges in planning conditions (Section 26(2)(g) and (h) of the 1963 Act).

The amount received in contributions has continued to rise since 1987 with an exceptional decline of approximately 2.5 per cent between 1992 and 1993. There was an increase of approximately 26% for 1997 and a further increase of almost 15% in 1998 was followed by an increase of over 31% this year. Increases or decreases in the figures, may be the result of a number of factors such as changes in the rates charged, size and type of developments carried out in a particular year, the overall level of implementation of planning permissions and perhaps increased enforcement of planning conditions.

Table 20: Development Contributions

Year	Total Sum Received £
1987	5 181 562
1988	6 450 699
1989	9 016 987
1990	10 690 887
1991	12 348 630
1992	15 895 196
1993	15 483 241
1994	20 544 507
1995	22 398 667
1996	36 179 998
1997	45 531 558
1998	52 236 043
1999	68 653 475

Table 21: Development Contributions by Area

Area	Contributions	
	1998	1999
Carlow	83 684	465 727
Cavan	377 913	571 345
Clare	792 011	1 281 083
Cork	4 359 083	5 810 690
Donegal	775 759	1 935 041
Dun Laoghaire/Rathdown	1 949 762	3 868 167
Fingal	6 667 806	9 578 373
Galway	304 135	1 182 726
Kerry	1 187 994	1 107 710
Kildare	5 886 787	3 995 167
Kilkenny	697 754	566 437
Laois	337 710	615 150
Leitrim	46 250	172 190
Limerick	765 074	1 297 100
Longford	48 491	159 219
Louth	1 470 243	2 400 714
Mayo	551 334	1 425 626
Meath	2 532 673	2 834 004
Monaghan	67 710	175 450
Offaly	360 093	680 198
Roscommon	344 755	373 010
Sligo	85 270	52 600
South Dublin	6 300 000	7 500 000
Tipperary NR	385 897	357 026
Tipperary SR	451 897	744 111
Waterford	454 775	1 042 978
Westmeath	1 021 340	935 150
Wexford	1 135 357	2 634 504
Wicklow	1 848 019	2 813 901
Sub-total	41 289 576	56 575 397
Cork	924 813	1 369 665
Dublin	6 022 167	7 188 845
Galway	2 117 787	2 193 886
Limerick	996 362	660 215
Waterford	885 338	665 467
Sub-total	10 946 467	12 078 078
Total	52 236 043	68 653 475

II Enforcement

Tables 22, 23, 24 and 24A

These tables give information on the number of enforcement cases under three principal procedures:

- Prosecution under Section 24 of the 1963 Act (as amended);
- Serving of an Enforcement Notice under Sections 31 and 35 as well as Sections 32, 36 and 37 of the 1963 Act;
- Serving of a Warning Notice under Section 26 of the 1976 Act (as amended).

Where S24 of the 1963 Act and S26 of the 1976 Act (both as amended) are concerned, convictions include both summary prosecution and prosecution on indictment. 'Cases initiated' under these sections include only those cases where legal proceedings have been brought, whereas under the other sections (i.e. enforcement notice) such cases refer to the number of notices that have been issued, not all of which would have necessitated further action in the courts.

Table 24A gives the figures for compliance with these notices and for which therefore no further action was required. This is the fourth year for which this information has been collected. As the issuing of the notice and the compliance with it need not necessarily take place within the same reporting year these tables will be better evaluated in the light of next year's returns.

Table 22: Enforcement Cases Initiated, by Procedure

Enforcement procedure	1994	1995	1996	1997	1998	1999
S24 1963 Act	33	38	40	20	6	27
S31 1963 Act	813	916	948	874	952	1 070
S32 1963 Act	6	7	4	1	6	14
S35 1963 Act	77	73	55	85	61	51
S36 1963 Act	0	2	0	0	0	0
S37 1963 Act	0	0	2	0	0	0
S26 1976 Act	185	301	379	293	272	234
Total	1 114	1 337	1 428	1 273	1 297	1 396

Table 23: Enforcement Cases Convicted, by Procedure

Enforcement procedure	1994	1995	1996	1997	1998	1999
S24 1963 Act	2	4	10	3	3	2
S31 1963 Act	45	126	221	189	203	185
S32 1963 Act	1	0	1	0	0	0
S35 1963 Act	4	7	9	8	10	18
S36 1963 Act ¹	-	-	-	-	-	-
S37 1963 Act	0	0	2	0	0	0
S26 1976 Act	26	47	28	20	33	5
Total	78	184	271	220	249	210

Note 1: S36 makes no provision for conviction

Table 24: Enforcement Cases Initiated and Convicted by Area and Procedure in 1999

Area	S24/1963		S26/1976		S31/1963		S32/1963		S35/1963	
	I	C	I	C	I	C	I	C	I	C
Carlow	0	0	0	0	1	0	0	0	1	0
Cavan	0	0	3	0	6	0	0	0	0	0
Clare	8	0	23	0	66	24	0	0	0	0
Cork	2	1	3	0	40	1	0	0	3	0
Donegal	1	0	0	0	65	13	4	1	8	0
Dun Laoghaire/Rathdown	0	0	2	0	31	6	0	0	0	0
Fingal	0	0	10	3	87	45	0	0	0	0
Galway	0	0	10	0	83	17	0	0	0	0
Kerry	0	0	3	0	107	0	0	0	6	0
Kildare	0	0	34	0	67	12	0	0	0	0
Kilkenny	4	0	25	0	0	0	0	0	0	0
Laois	0	0	2	0	23	10	0	0	0	0
Leitrim	1	0	0	0	0	0	0	0	0	0
Limerick	0	0	1	0	3	2	0	0	0	0
Longford	0	0	0	0	0	0	0	0	0	0
Louth	0	0	12	0	12	2	0	0	0	0
Mayo	1	1	1	1	0	0	0	0	2	0
Meath	0	0	1	0	0	0	0	0	0	0
Monaghan	0	0	8	0	5	0	0	0	0	0
Offaly	0	0	1	0	17	0	0	0	1	0
Roscommon	0	0	0	0	0	0	0	0	0	0
Sligo	2	0	12	0	41	4	0	0	0	0
South Dublin	1	0	1	0	58	14	0	0	1	0
Tipperary NR	0	0	11	0	3	0	0	0	0	0
Tipperary SR	1	0	1	0	61	10	0	0	0	0
Waterford	0	0	0	0	15	2	0	0	7	0
Westmeath	0	0	0	0	0	0	0	0	0	0
Wexford	0	0	7	0	36	6	0	0	0	0
Wicklow	0	0	53	0	62	0	0	0	4	0
Sub-total	21	2	224	4	889	168	4	1	33	0
Cork	0	0	2	0	18	5	0	0	0	0
Dublin	2	0	4	0	41	10	4	0	0	0
Galway	4	0	0	0	96	0	6	0	18	0
Limerick	0	0	3	0	5	2	0	0	0	0
Waterford	0	0	1	1	21	0	0	0	0	0
Sub-total	6	0	10	1	181	17	10	0	18	0
Total	27	2	234	5	1 070	185	14	1	51	0

I = Initiated and C = Convicted

Table 24A: Enforcement Notices - Compliance

Area	S31/1963	S32/1963	S35/1963	S36/1963	S37/1963
Carlow	2	0	1	0	0
Cavan	0	0	0	0	0
Clare	37	0	0	0	0
Cork	19	0	3	0	0
Donegal	11	1	1	0	0
Dun Laoghaire/Rathdown	13	0	0	0	0
Fingal	35	0	0	0	0
Galway	3	0	0	0	0
Kerry	66	0	4	0	0
Kildare	55	0	0	0	0
Kilkenny	0	0	0	0	0
Laois	13	0	0	0	0
Leitrim	0	0	0	0	0
Limerick	1	0	0	0	0
Longford	0	0	0	0	0
Louth	8	0	0	0	0
Mayo	0	0	0	0	0
Meath	0	0	0	0	0
Monaghan	0	0	0	0	0
Offaly	11	0	0	0	1
Roscommon	0	0	0	0	0
Sligo	31	0	0	0	0
South Dublin	9	0	0	0	0
Tipperary NR	0	0	0	0	0
Tipperary SR	26	0	0	0	0
Waterford	13	0	7	0	0
Westmeath	0	0	0	0	0
Wexford	9	0	0	0	0
Wicklow	35	0	2	0	0
Sub-total	397	1	18	0	1
Cork	9	0	0	0	0
Dublin	20	0	0	0	0
Galway	0	0	0	0	0
Limerick	3	0	0	0	0
Waterford	10	0	0	0	0
Sub-total	42	0	0	0	0
Tipperary NR	0	0	0	0	0
Subtotal	0	0	0	0	0
Total	439	1	18	0	1

Tables 25A, 25B, 26A and 26B

The fourth principal enforcement procedure is based on the jurisdiction of the High Court and the Circuit Court to grant injunctions where unauthorised development is taking place. Not only the planning authority but any member of the public can make an application to the Court under Section 27 of the 1976 Act (as amended). The use of this procedure has therefore been separated into two categories: initiation by the planning authority and initiation by 'other bodies or individuals.'

As both statistics are based on figures provided by the planning authorities, the second category may be underestimated because the planning authority need not necessarily be aware of applications by third parties.

Table 25A Applications for Injunction Order to High Court S27 1976 Act (as amended)

Year	Applications by Planning Authority		Applications by Others	
	Number of applications	Number granted	Number of applications	Number granted
1993	35	19	5	2
1994	35	15	3	1
1995	66	20	2	2
1996	42	27	2	1
1997	29	17	0	0
1998	51	25	1	0
1999	53	26	1	1

Table 25B Applications for Injunction Order to Circuit Court

Year	Applications by Planning Authority		Applications by Others	
	Number of applications	Number granted	Number of applications	Number granted
1993	22	9	3	2
1994	30	16	2	2
1995	21	8	0	0
1996	37	17	2	2
1997	37	13	2	2
1998	52	31	2	0
1999	71	23	3	3

Data on applications to the Circuit Court were collected for 1992 for the first time when there was zero return.

Table 26A: Applications for Injunction Order to the High Court S27 1976, by Area

Area	By Planning Authority		Applications by Others	
	Number of applications	Number granted	Number of applications	Number granted
Carlow	0	0	0	0
Cavan	8	8	0	0
Clare	0	0	0	0
Cork	0	0	0	0
Donegal	0	0	0	0
Dun Laoghaire/Rathdown	1	1	0	0
Fingal	30	10	0	0
Galway	0	0	0	0
Kerry	0	0	0	0
Kildare	1	1	0	0
Kilkenny	0	0	1	1
Laois	0	0	0	0
Leitrim	0	0	0	0
Limerick	0	0	0	0
Longford	0	0	0	0
Louth	1	0	0	0
Mayo	0	0	0	0
Meath	2	2	0	0
Monaghan	0	0	0	0
Offaly	1	0	0	0
Roscommon	0	0	0	0
Sligo	0	0	0	0
South Dublin	2	0	0	0
Tipperary NR	0	0	0	0
Tipperary SR	0	0	0	0
Waterford	0	0	0	0
Westmeath	0	0	0	0
Wexford	0	0	0	0
Wicklow	0	0	0	0
Sub-total	46	22	1	1
Cork CB	0	0	0	0
Dublin CB	7	4	0	0
Galway CB	0	0	0	0
Limerick CB	0	0	0	0
Waterford CB	0	0	0	0
Sub-total	7	4	0	0
Total	53	26	1	1

Table 26B: Applications for Injunction Order to the Circuit Court

Area	By Planning Authority		Applications by Others	
	Number of applications	Number granted	Number of applications	Number granted
Carlow	0	0	0	0
Cavan	0	0	0	0
Clare	0	0	0	0
Cork	3	1	0	0
Donegal	5	5	0	0
Dun Laoghaire/Rathdown	0	0	0	0
Fingal	0	0	0	0
Galway	15	3	0	0
Kerry	3	1	2	2
Kildare	7	7	0	0
Kilkenny	0	0	0	0
Laois	0	0	0	0
Leitrim	0	0	0	0
Limerick	11	5	0	0
Longford	0	0	0	0
Louth	0	0	0	0
Mayo	0	0	0	0
Meath	0	0	0	0
Monaghan	5	0	0	0
Offaly	0	0	0	0
Roscommon	0	0	0	0
Sligo	0	0	0	0
South Dublin	0	0	0	0
Tipperary NR	0	0	0	0
Tipperary SR	0	0	0	0
Waterford	0	0	0	0
Westmeath	0	0	0	0
Wexford	1	1	0	0
Wicklow	0	0	1	1
Sub-total	50	23	3	3
Cork CB	0	0	0	0
Dublin CB	0	0	0	0
Galway CB	21	0	0	0
Limerick CB	0	0	0	0
Waterford CB	0	0	0	0
Sub-total	21	0	0	0
Total	71	23	3	3

III Fees and Administration

Tables 27, 28, 29, 30 and 31

The changes in fee class classification are noted in the introduction to Tables 18 and 19. Table 28 is retained as a reference point. Tables 27, 28 and 29 deal with planning application fees. The total sum received from planning application fees decreased in the years 1991 to 1993. In subsequent years increases were partially explained by the increase in fees in the 1994 Regulations. Increases over the previous two years - 1998; 35%, 1999; 24% - are attributable to the increase in the number of applications

As in previous years, planning fees for Class 5 applications (previously class 4) continued to be quite high. Though

amounting to only fourteen per cent of all applications, class 5 continues to account for almost sixty per cent of fees.

Table 29 gives a detailed account of the fees received in each area specified by class of development (see Appendix A for the type of land use in each class). Tables 30 and 31 give the fees received under a number of other categories.

Table 27: Total Amount Received in Application Fees by Class of Development - with Percentage Breakdown*

1999	£s	Percentage	1999	£s	Percentage
Class 1	7 908 815	32.94	Class 9	47 918	0.20
Class 2	646 980	2.69	Class 10	72 078	0.30
Class 3	205 930	0.86	Class 11	124 393	0.52
Class 4	128 635	0.54	Class 12	13 257	0.06
Class 5	13 611 842	56.70	Class 13	40 988	0.17
Class 6	550	0.00	Class 14	816	0.00
Class 7	149 618	0.62	Class 15	925 323	3.85
Class 8	130 804	0.54			
Total				24 007 947	100

Table 28: Total Amount Received in Application Fees by Class of Development

Class of Development	1990	1991	1992	1993	1994	1995
2	203 059	198 640	195 820	186 218	287 037	-
3	190 260	142 339	130 497	128 000	350 963	-
4	4 458 479	4 066 744	3 603 220	3 171 997	4 734 465	-
5	61 648	58 866	65 393	45 691	80 429	-
6	31 696	38 965	33 775	33 474	34 133	-
7	24 815	33 742	25 855	19 728	30 716	-
8	17 370	17 003	26 660	23 575	34 191	-
9	66 879	61 601	58 338	71 056	80 411	-
10	4 197	2 688	5 252	6 645	5 698	-
11	154 224	159 827	131 268	173 295	221 090	-
Total	6 803 274	6 109 980	5 695 338	5 336 469	8 120 165	9 697 489

Table 29: Amount Received in Application Fees by Area and Class of Development

Area	Class 1	Class 2	Class 3	Class 4	Class 5	Class 6	Class 7	Class 8
Carlow	130 960	6 728	3 143	868	167 124	0	0	0
Cavan	177 942	8 826	14 239	109 044	15 438	124	210	2 097
Clare	261 020	26 275	6 119	87	274 243	0	133	343
Cork	771 564	58 319	15 132	1 283	1 187 328	0	14 705	5 081
Donegal	436 312	26 856	6 000	1 222	455 475	0	48	1 138
Dun Laoghaire/Rathdown	145 168	37 672	141	0	514 961	0	0	473
Fingal	300 160	28 297	14 006	1 339	1 287 399	0	1 347	47 791
Galway	398 177	36 405	7 626	78	420 822	0	15 304	300
Kerry	320 430	19 090	8 141	680	503 599	310	1 722	3 367
Kildare	314 950	21 395	16 051	0	536 626	0	9 862	0
Kilkenny	146 450	27 021	10 243	980	241 056	0	28 597	3 364
Laois	247 295	10 207	2 797	0	213 157	0	0	0
Leitrim	88 301	8691	1 320	0	71 565	0	2 635	0
Limerick	284 504	18 594	9 817	1476	356 361	0	10 910	131
Longford	115 941	9 931	6 676	0	111 560	0	0	0
Louth	240 701	22 857	7 444	395	332 108	0	4 022	772
Mayo	309 032	12 923	3 099	0	251 063	0	15 000	1 660
Meath	378 398	25 293	11 191	2 720	640 560	0	3 719	1 077
Monaghan	122 020	7 533	6 951	0	126 961	0	0	533
Offaly	162 503	11 002	4 896	0	158 207	0	9 646	58
Roscommon	103 544	7 797	4 726	0	204 618	116	0	768
Sligo	88 037	6 692	1 311	0	54 745	0	982	640
South Dublin	269 133	21 432	950	221	1 050 279	0	518	8 178
Tipperary NR	90 524	8 924	8 314	777	167 444	0	11 182	82
Tipperary SR	126 465	11 750	12 725	0	220 820	0	24	58
Waterford	112 413	9 318	7 011	116	80 293	0	7458	261
Westmeath	260 800	10 949	2 659	0	312 383	0	0	58
Wexford	382 962	23 181	8 443	1 494	390 008	0	10 684	3 447
Wicklow	301 626	22 589	4 541	5 855	418 352	0	0	801
Sub-total	7 086 932	546 547	205 712	128 635	10 764 555	550	148 708	82 478
Cork	72 805	18 191	0	0	305 291	0	0	2 429
Dublin	419 942	52 302	0	0	1 663 068	0	910	3 740
Galway	217 383	13 235	0	0	481 044	0	0	26 340
Limerick	39 182	9 489	0	0	158 905	0	0	15 000
Waterford	72 571	7 216	218	0	238 979	0	0	817
Sub-total	821 883	100 433	218	0	2 847 287	0	910	48326
Total	7 908 815	646 980	205 930	128 635	13 611 842	550	149 618	130 804

Table 29: Amount Received in Application Fees by Area and Class of Development (Contd)

Area	Class 9	Class 10	Class 11	Class 12	Class 13	Class 14	Class 15	Fees Total
Carlow	1 032	2 880	1 523	58	0	0	38 013	352 329
Cavan	145	248	232	0	0	0	29 697	357 842
Clare	94	1 660	454	448	0	24	77 488	648 388
Cork	8 381	1 653	2 295	1 806	35	0	16 592	2 084 174
Donegal	663	4 892	232	232	208	208	25 192	958 678
Dun Laoghaire/Rathdown	2 507	0	5 040	58	0	0	4 231	710 251
Fingal	6 703	0	12 425	174	1 019	146	66 003	1 766 809
Galway	146	167	1 609	1 208	0	0	79 133	960 975
Kerry	2 133	1 878	1 584	58	4 476	0	15 391	882 859
Kildare	0	5 126	1 478	715	0	0	79 043	985 246
Kilkenny	2 607	836	1 993	0	0	0	17 852	480 999
Laois	3 045	8 911	2 416	0	0	0	5 723	494 346
Leitrim	0	0	696	0	0	0	0	173 208
Limerick	2 137	584	2 163	58	0	0	45 039	731 774
Longford	0	1 084	6 069	0	179	0	8 057	259 497
Louth	438	130	5 009	704	502	0	56 442	671 524
Mayo	0	2 066	950	0	0	0	50 118	645 911
Meath	350	934	843	951	3 899	146	11 827	1 081 908
Monaghan	273	13 829	1 495	0	228	146	23 296	303 265
Offaly	0	3 325	464	453	0	0	36 630	387 184
Roscommon	0	761	0	1 579	0	0	23 843	347 752
Sligo	1 446	0	0	58	0	0	5 749	159 660
South Dublin	3 588	1 132	20 186	0	7 245	0	8 594	1 391 456
Tipperary NR	1 474	232	372	0	0	0	6 918	296 243
Tipperary SR	0	1 856	1 645	292	0	0	13 243	388 878
Waterford	0	0	232	1 133	0	0	19 156	237 391
Westmeath	0	1 666	2 204	194	0	0	9 079	599 992
Wexford	922	1 306	2 727	0	778	146	3 578	829 676
Wicklow	0	6 128	1 140	1 103	22 419	0	33 186	817 740
Sub-total	38 084	63 284	77 476	12 077	40 988	816	809 113	20 225 955
Cork	1 352	4 151	2 104	976	0	0	19 529	426 828
Dublin	6 133	1 679	29 718	58	0	0	36 275	2 213 825
Galway	2 114	2 357	8 812	0	0	0	25 179	776 464
Limerick	0	607	2 796	146	0	0	26 581	252 706
Waterford	235	0	3 487	0	0	0	8 646	332 169
Sub-total	9 834	8 794	46 917	1 180	0	0	116 210	4 001 992
Total	47 918	72 078	124 393	13 257	40 988	816	925 323	24 007 947

Table 30: Fees Received Other than Application Fees by Area and by Type of Fee¹

Area	Extension	Register	Licence	Exemption	Compliance	Miscellaneous	Total
Carlow	0	0	1 450	605	1 015	4 014	7 084
Cavan	0	0	1 556	0	0	3 391	4 947
Clare	141	0	1 342	0	0	10 017	11 500
Cork	551	8 424	10 883	163	3 604	31 610	55 235
Donegal	564	0	620	0	275	20 278	21 737
Dun Laoghaire/Rathdown	90	11 456	0	0	360	38 042	49 948
Fingal	200	3 407	0	0	0	2 347	5 954
Galway	135	3 750	1 605	0	0	17 158	22 648
Kerry	120	0	172	0	945	12 399	13 636
Kildare	90	401	313	0	2 145	21 267	24 216
Kilkenny	0	0	0	0	0	724	724
Laois	0	0	364	0	0	10 987	11 351
Leitrim	0	1 716	242	2	2	1 170	3 128
Limerick	90	4 524	1 937	591	0	29 340	36 482
Longford	0	0	0	0	0	2 602	2 602
Louth	40	920	141	150	0	26 433	27 684
Mayo	0	175	2 032	0	0	54 894	57 101
Meath	0	1 023	1 821	587	2 640	7 199	13 288
Monaghan	45	1 096	1 502	0	1 240	1 524	5 407
Offaly	0	0	15	20	20	3 030	3 085
Roscommon	0	0	1 170	0	4 205	2 911	8 286
Sligo	0	0	1 198	0	1 385	3 660	6 243
South Dublin	45	4 328	0	0	0	6 066	10 439
Tipperary NR	270	1 678	748	50	45	1 039	3 830
Tipperary SR	0	910	1 223	140	2 175	4 098	8 546
Waterford	270	365	6 696	0	480	6 436	14 247
Westmeath	90	0	2 017	1 600	2 065	13 379	19 151
Wexford	0	0	16	65	0	31 367	31 448
Wicklow	225	0	1 291	235	470	32 745	34 966
Sub-total	2 966	44 173	40 354	4 206	23 069	400 127	514 913
Cork	90	0	2 150	0	0	11 965	14 205
Dublin	315	11 351	0	0	0	40 605	52 271
Galway	0	0	907	0	0	9 019	9 926
Limerick	0	0	396	0	7 000	2 168	9 564
Waterford	135	180	0	0	4 654	0	4 969
Sub-total	540	11 531	3 453	0	11 654	63 757	90 935
Totals	3 506	55 704	43 807	4 206	34 723	463 884	605 848

Note 1: The categories of Fees and Income are:

Extension and further extension application fees (Local Government (Planning and Development) Regulations, 1994) Sixth Schedule

Register fees (Local Government Planning and Development) Regulations, 1994) Sixth Schedule

Licence fees (S.89, 1963 Act) (Local Government Planning and Development) Regulations, 1994) Seventh Schedule

Fees for letters or certificates that development is exempt

Fees for letters or certificates that conditions/permission complied with, etc.

Miscellaneous - e.g. copies of documents, etc.

Table 31: Total Amount Received in Fees by Type of Fee

Type of fee	1994	1995	1996	1997	1998	1999
Application fees, gross	8 120 165	9 697 489	11 928 216	13 561 467	19 433 307	24 077 947
Application fees, refunds	- 200 715	- 123 077	- 270 071	- 301 134	- 312 478	- 562 744
Application fees, net	7 919 450	9 574 412	11 658 145	13 260 333	19 120 829	23 445 203
Other fees total	331 132	521 781	408 668	471 246	570 852	605 848
Total	8 250 582	10 096 193	12 066 813	13 731 579	19 691 681	24 051 051

Tables 32, 33, 34 and 35

Tables 32 and 34 give a breakdown of staff by full/part time and technical/ administrative. The category 'part time' includes part time employees as well as full time employees who are involved in planning work for only part of their time. The total staff complement has been calculated as the sum of technical and administrative staff. Technical staff include fire officers, health officers, etc., who are for part of their time involved with planning control duties.

Over two-thirds of staff involved in planning in the local authorities are full time. Reporting on the category "part-time" has been uneven and the category may not be correctly interpreted by all authorities.

Tables 33 and 35 give the costs involved in operating the planning control procedures. Costs are estimated in two ways. The first category deals with costs as given under Programme Group 4 (Planning and Development) of the annual estimates, while the second column gives an estimate of planning control costs as estimated by the planning authority. These are calculated by excluding costs of development plans, other development and promotion and industrial development from Programme Group 4, while adding staff costs from Programme Group 8 (Miscellaneous) which relate to planning control.

However, these figures can be treated in some instances only as estimates of staff numbers and costs. In comparing figures with previous years it must be taken into account that data are not always available for all authorities and that differences in interpretation continue to occur.

Table 32: Staff

Year	Full-time	Part-time	Technical	Administrative	Total
1990	672	415	603	484	1 087
1991	687	422	617	492	1 109
1992	695	421	617	499	1 116
1993	706	367	601	472	1 073
1994	694	357	573	478	1 051
1995	696	337	545	488	1 033
1996	711	336	537	510	1 047
1997	759	355	579	535	1 114
1998	810	304	589	525	1 114
1999	955	334	661	628	1 289

Note 1: *The total staff complement has been calculated as the sum of technical and administrative staff. Small discrepancies with full time/part time staff data may occur.*

Table 33: Costs of Planning Control

Year	Costs of Programme 4 £s	Costs of Planning Control £s
1992	31 583 768	16 795 877
1993	22 278 976	15 599 945
1994	33 518 017	19 497 809
1995	35 633 676	19 699 031
1996	33 334 066	19 894 749
1997	36 421 137	22 216 064
1998	38 273 724	25 896 743
1999	46 908 846	27 124 398

Table 34: Staff by Area

Area	Technical		Administrative		Total
	Full time	Part time	Full time	Part time	
Carlow	3	9	5	2	19
Cavan	4	15	8	3	30
Clare	12	5	19	2	38
Cork	28	39	50	10	127
Donegal	17	4	22	19	62
Dun Laoghaire/Rathdown	22	0	35	0	57
Fingal	36	3	43	0	82
Galway	19	11	19	3	52
Kerry	15	4	14	5	38
Kildare	13	17	11	4	45
Kilkenny	10	6	8	3	27
Laois	5	0	7	0	12
Leitrim	5	6	4	1	16
Limerick	20	0	14	0	34
Longford	2	9	5	2	18
Louth	10	9	10	5	34
Mayo	7	8	6	10	31
Meath	7	1	15	4	27
Monaghan	3	7	6	5	21
Offaly	9	1	10	0	20
Roscommon	4	0	5	0	9
Sligo	5	8	7	0	20
South Dublin	20	9	36	0	65
Tipperary NR	7	0	8	4	19
Tipperary SR	9	3	8	11	31
Waterford	8	1	7	1	17
Westmeath	11	12	9	5	37
Wexford	9	8	13	4	34
Wicklow	15	12	18	3	48
Sub-total	335	207	422	106	1 070
Cork CB	17	1	10	6	34
Dublin CB	72	0	63	0	135
Galway CB	10	0	9	0	19
Limerick CB	4	9	5	3	21
Waterford CB	5	1	3	1	10
Sub-total	108	11	90	10	219
Total	443	218	512	116	1 289

Table 35: Costs of Planning Control by Area *1

Area	Cost of Programme 4 £s	Cost of Planning Control £s
Carlow	231 120	109 702
Cavan	779 323	508 305
Clare	1 270 496	808 801
Cork	4 877 561	2 369 391
Donegal	1 414 276	949 389
Dun Laoghaire/Rathdown	1 087 400	632 100
Fingal	3 391 000	1 416 000
Galway	135 339	1 152 269
Kerry	1 378 645	933 296
Kildare	1 615 570	860 432
Kilkenny	656 700	437 550
Laois	656 451	523 270
Leitrim	280 323	284 485
Limerick	1 716 075	934 051
Longford	189 458	198 458
Louth	1 286 881	633 256
Mayo	46 600	88 410
Meath	1 399 576	988 920
Monaghan	445 670	245 064
Offaly	568 819	69 047
Roscommon	340 000	295 000
Sligo	371 559	316 650
South Dublin	3 143 580	2 085 800
Tipperary NR	707 720	445 724
Tipperary SR	3 846 913	388 680
Waterford	481 639	363 621
Westmeath	552 821	294 966
Wexford	1 030 541	1 005 162
Wicklow	1 103 868	781 927
Sub-total	35 005 924	20 119 726
Cork CB	1 922 400	1 058 400
Dublin CB	8 874 000	4 897 250
Galway CB	418 780	477 508
Limerick CB	456 100	382 480
Waterford CB	231 642	189 034
Sub-total	11 902 922	7 004 672
Total	46 908 846	27 124 398

IV Other

Tables 36, 37, and 38

The Local Government (Planning and Development) Act 1990, which consolidated and amended the law on planning compensation, took effect from June 10, 1990. Up to 1994 data on compensation were provided in two tables to take account of claims lodged under 1963 legislation. All new claims are now made under 1990 legislation. Table 36 provides a summary from the year 1990 onwards and gives additional information on the number and cost of claims which were 'otherwise disposed of'. Five notices were served under Section 29 of 1963 (Obligation to purchase land).

Apart from the year 1990 when claims to the value of £41m were lodged, the amount of claims from 1987 to 1992 was between £9m and £11m. The 1993 figure, in excess of £1.3m, represented an 85 per cent decrease over the previous year and the amount claimed in 1994, £0.33m, represented a further decrease of 76 per cent. The figure for 1995 was £0.77m. There were no claims in 1996 and the five claims registered in 1997 were all disposed of. The small number of claims made no longer justifies a table by 'Area'. No Authority reported a claim for compensation lodged during the reporting period. County Dun Laoghaire/Rathdown has an outstanding claim (no value supplied); County Kerry reported an outstanding claim (value: £500,000) as did County Kildare (value: £2.5m).

Table 36: Claims for Compensation ¹

Year	Claims		Number paid	Amount paid £s	'Disposed'	
	No	Amount £s			No	Value £s
1990	23	41 035 394	3	80 000	15	12 496 900
1991	22	11 162 505	3	25 000	11	6 966 985
1992	9	9 053 348	2	34 000	9	3 356 000
1993	6	1 363 000	5	171 700	8	2 051 000
1994	5	325 070	2	12 000	5	476 000
1995	4	774 500	0	0	1	11 500
1996	0	0	1	26 215	0	0
1997	5	2 320 000	0	0	5	2 320 000
1998	7	10 080 000	0	0	3	5 800 000
1999	0	0	0	0	0	0

¹ Local Government (Planning and Development) Act, 1990 only.

Table 37: Serving of Notices under S29 of the 1963 Planning Act (obligation to purchase land)

Year	Number of notices	Decisions to comply		Cost £
		Planning Authority	An Bord Pleanála	
1992	1	1	1	500 000
1993	3	2	0	16 000
1994	4	0	1	N/A
1995	5	1	1	N/A
1996	4	0	0	N/A
1997	2	1	0	N/A
1998	0	0	0	0
1999	5	0	0	N/A

Tables 38, 39, 40, 41, 42, 43 and 44

Table 38 gives the number of agreements made under S38 of the 1963 Planning Act. These are formal agreements (covenants) between the planning authority and the landowner. The use of this provision varies widely between planning authorities.

Table 39 shows the number of Tree Preservation Orders made and in force by the end of the year by area and for the period 1992 to 1996. Figures for Tree Preservation Orders continue to be unreliable. Where discrepancies cannot be otherwise resolved, figures from previous year are used. As no preservation orders appear to have been made in 1999 and none were revoked, the number in force for 1999 has not changed from 1998.

The annual statistics no longer record the number of Environmental Impact statements received by local authorities. These are available in a separate publication "Inventory of Environmental Impact Statements submitted".

The use of S4 of the 1982 Act, which allows an extension of the five-year validity period of a permission where development is under construction, is recorded in Table 40.

Table 42 records the levels of use of various sections of the Planning Acts.

Table 38: Agreements under S38 of the 1963 Planning Act by Area

	1994	1995	1996	1997	1998	1999
Carlow	0	4	4	10	35	22
Cavan	0	0	0	0	0	0
Clare	30	20	33	28	27	57
Cork	76	0	196	160	143	304
Donegal	5	7	6	8	22	26
Dun Laoghaire/Rathdown	0	0	1	3	7	0
Fingal	12	21	9	12	0	0
Galway	70	89	170	150	0	0
Kerry	2	3	5	2	0	18
Kildare	150	122	112	115	121	81
Kilkenny	3	2	6	6	0	0
Laois	6	5	7	7	19	37
Leitrim	0	0	0	0	0	0
Limerick	4	3	9	14	8	3
Longford	0	0	0	0	0	0
Louth	13	8	8	0	0	19
Mayo	0	0	0	0	0	0
Meath	14	31	21	30	23	19
Monaghan	0	2	1	1	2	15
Offaly	6	15	7	5	3	2
Roscommon	2	6	12	8	3	4
Sligo	0	0	1	2	13	24
South Dublin	0	0	0	0	0	0
Tipperary NR	0	0	1	5	1	1
Tipperary SR	0	0	0	3	2	6
Waterford	0	0	1	3	4	7
Westmeath	0	20	11	15	19	15
Wexford	0	0	0	1	0	7
Wicklow	85	50	48	67	87	76
Sub-total	487	400	668	655	539	743
Cork	0	0	0	1	0	0
Dublin	0	0	0	0	0	0
Galway	0	0	0	0	0	0
Limerick	0	0	0	0	0	0
Waterford	0	0	0	0	0	0
Sub-total	0	0	0	1	0	0
Total	487	400	668	656	539	743

Table 39: Tree Preservation Orders by Area

	Number of orders made					No. of orders in force at end of 1999
	1992	1993	1994	1995	1996	
Carlow	0	0	0	1	0	3
Cavan	0	0	0	0	0	0
Clare	0	0	1	0	0	1
Cork	0	0	0	0	0	8
Donegal	0	0	0	0	0	3
Dun Laoghaire/Rathdown	N/A	N/A	0	0	0	8
Fingal	N/A	N/A	0	0	0	3
Galway	0	0	0	0	0	1
Kerry	0	0	0	0	0	0
Kildare	1	0	0	0	0	4
Kilkenny	0	1	0	0	0	5
Laois	0	0	0	0	0	0
Leitrim	0	0	0	0	0	2
Limerick	0	0	0	0	0	2
Longford	0	0	0	0	0	0
Louth	0	1	0	1	0	4
Mayo	1	1	0	1	0	9
Meath	0	0	0	1	0	5
Monaghan	0	0	0	0	0	1
Offaly	0	0	0	0	0	14
Roscommon	0	0	0	0	0	3
Sligo	0	0	0	0	0	0
South Dublin	N/A	N/A	0	0	0	3
Tipperary NR	0	1	0	0	0	3
Tipperary SR	0	0	0	2	0	6
Waterford	0	1	0	0	0	24
Westmeath	0	0	0	0	0	17
Wexford	0	0	0	0	0	1
Wicklow	0	0	2	0	0	48
Sub-total	3	5	3	6	0	178
Cork Co.Bor.	0	0	0	0	0	11
Dublin Co.Bor.	0	0	1	0	0	2
Galway Co.Bor.	0	0	0	0	0	0
Limerick Co.Bor.	0	0	0	0	0	3
Waterford Co.Bor.	0	0	0	0	0	2
Sub-total	0	0	1	0	0	18
Total	3	5	4	6	0	196

Table 40: Extension of Duration of Permission for Substantially Completed Development (S4 1982 Act)

Year	Applied	Extensions Granted	Refused
1992	92	67	20
1993	96	74	16
1994	124	98	12
1995	142	112	19
1996	152	113	28
1997	134	106	20
1998	112	79	20
1999	80	60	10

Table 41: S89 Licence Applications

Area	Applications	Granted	Refused
Carlow	8	8	0
Cavan	31	31	0
Clare	20	8	3
Cork	87	66	18
Donegal	11	11	0
Dun Laoghaire/Rathdown	1	1	0
Fingal	0	0	0
Galway	38	18	0
Kerry	6	4	2
Kildare	13	9	0
Kilkenny	0	0	0
Laois	11	3	5
Leitrim	7	6	1
Limerick	34	8	8
Longford	0	0	0
Louth	16	13	0
Mayo	45	45	0
Meath	20	14	0
Monaghan	15	15	0
Offaly	0	0	0
Roscommon	16	16	0
Sligo	6	2	0
South Dublin	0	0	0
Tipperary NR	6	5	1
Tipperary SR	31	31	0
Waterford	274	268	6
Westmeath	23	19	4
Wexford	8	8	0
Wicklow	37	27	7
Sub-total	764	636	55
Cork	17	33	14
Dublin	311	254	57
Galway	1	1	0
Limerick	45	43	2
Waterford	1	0	1
Sub-total	375	331	74
Total	1 139	967	129

Table 42: Use of Miscellaneous Sections of the 1963 Planning Act

Section ¹	1994	1995	1996	1997	1998	1999
S30 1963 Act	0	0	0	10	0	3
S44 1963 Act	0	0	0	0	0	0
S47 1963 Act	1	1	0	0	0	-
S48 1963 Act	0	1	0	0	0	-
S54 1963 Act	0	0	0	0	1	-
S76 1963 Act	18	16	5	6	0	-
S85 1963 Act	27	45	67	44	36	30

Note 1: The titles of these sections are listed in Appendix B

Table 43:

Under S19 of the 1963 Planning Act each planning authority must make a development plan for its area and this plan must be reviewed at least once in every five years. In Table 43, the year in which the most recent development plan was adopted is given for each planning authority. This table takes account of the situation up to the end of 1999, and draft plans have not been included.

Table 43: Development Plans by Planning Authority¹

Planning	Date Adopted	Date Review Due
<i>County Councils</i>		
Carlow	1997	2002
Cavan	1996	2001
Clare	1999	2004
Cork	1996	2001
Donegal & Rosnowlagh	1988	1993
- Ballyshannon	1997	2002
- Ballybofey	1996	2001
- Carndonagh	1997	2002
- Donegal town	1993	1998
- Killybegs	1993	1998
- Moville	1994	1999
Dun Laoghaire-Rathdown	1998	2003
Fingal	1994	1999
Galway	1997	2002
Kerry	1996	2001
Kildare	1999	2004
Kilkenny	1994	1999
Laois	1991	1996
Leitrim	1997	2002
Limerick	1999	2004
Longford	1997	2002
Louth	1997	2002
Mayo	1992	1997
Meath	1994	1999
Monaghan	1999	2004
Offaly	1996	2001
Roscommon	1993	1998
Sligo	1999	2004
South Dublin	1998	2003
Tipperary (NR)	1998	2003
Tipperary (SR)	1996	2001
- Cahir	1994	1999
- Fethard	1994	1999
Waterford	1999	2004
Westmeath	1994	1999
- Moate	1994	1999
- Mullingar	1994	1999
Wexford	1993	1998
Wicklow	1999	2004

Table 43: Development Plans by Planning Authority¹ (contd.)

Planning	Date Adopted	Date Review Due
<i>County Borough Corporations</i>		
Cork	1998	2003
Dublin	1999	2004
Limerick	1998	2003
Waterford	1994	1999
Galway	1999	2004
<i>Borough Corporations</i>		
Clonmel	1993	1998
Drogheda	1999	2004
Kilkenny	1994	1999
Sligo	1992	1997
Wexford	1993	1998
Galway Development Plan for Scheduled Towns of Athenry, Clifden, Gort and Tuam	1992	1997
Loughrea	1993	1998
<i>Urban District Councils</i>		
Arklow	1991	1996
Athlone	1990	1995
Athy	1990	1995
Ballina	1992	1997
Ballinasloe	1995	2000
Birr	1988	1993
Bray	1999	2004
Buncrana	1993	1998
Bundoran	1998	2003
Carlow	1998	2003
Carrickmacross	1993	1998
Carrick-on-Suir	1994	1999
Cashel	1995	2000
Castlebar	1991	1996
Castleblayney	1992	1997
Cavan	1996	2001
Ceannannus Mor	1994	1999
Clonakilty	1998	2003
Clones	1992	1997
Cobh	2000	2005
Dundalk	1996	2001
Dungarvan	1994	1999
Ennis	1992	1997
Enniscorthy	1992	1997
Fermoy	1998	2003
Killarney	1995	2000
Kilrush	1994	1999
Kinsale	1998	2003

Table 43: Development Plans by Planning Authority¹ (contd.)

Planning	Date Adopted	Date Review Due
Letterkenny	1993	1998
Listowel	1998	2003
Longford	1997	2002
Macroom	1996	2001
Mallow	1998	2003
Midleton	1998	2003
Monaghan	1993	1998
Naas	1999	2004
Navan	1996	2001
Nenagh	1986	1991
New Ross	1998	2003
Skibbereen	1998	2003
Templemore	1992	1997
Thurles	1993	1998
Tipperary	1994	1999
Tralee	1996	2001
Trim	1998	2003
Tullamore	1998	2003
Westport	1992	1997
Wicklow	1997	2002
Youghal	1997	2002

Appendix A

- Planning Fee Classes of Development

1. Dwellings
2. Domestic extensions etc.
3. Agricultural buildings and structures
4. Buildings or structures for keeping horses, ponies or greyhounds
5. Other buildings (other than 1, 2, 3, 4 - e.g. commercial)
6. Intensive agriculture, afforestation, peat extraction
7. Use of land for mining, quarrying etc, or for dumping
8. Use of land for caravanning etc, parking of vehicles or open storage
9. Provision of plant and machinery, or of storage tank or structures
10. Petrol filling stations
11. Advertisements
12. Electricity lines or overhead telecommunications lines
13. Use of land as a golf course or as a pitch and putt course
14. Use of land as a burial ground
15. Development not coming within any of the foregoing classes

Appendix B

- Miscellaneous Sections of the 1963 Planning Act

-
- S30 Revocation and modification of permission
 - S44 Requiring removal or alteration of hedge
 - S47 Creation of public rights of way pursuant to agreement
 - S48 Compulsory powers for creation of public rights of way
 - S54 Repair and tidying of advertisement structures and advertisements
 - S76 Extinguishment of public rights of way
 - S85 Placing of cables, wires and pipelines by planning authority
 - S89 Applications for various licences

Appendix C:

Enactments and Regulations relating to Physical Planning

Planning and Development Acts

Local Government (Planning and Development) Act, 1963 (No. 28 of 1963)

Local Government (Planning and Development) Act, 1976 (No. 20 of 1976)

Local Government (Planning and Development) Act, 1982 (No. 21 of 1982)

Local Government (Planning and Development) Act, 1983 (No. 28 of 1983)

Local Government (Planning and Development) Act, 1990 (No. 11 of 1990)

Local Government Act, 1991 (Sections 44 and 45) (No. 11 of 1991)

Local Government (Planning and Development) Act, 1992 (No. 14 of 1992)

Local Government (Planning and Development) Act, 1993 (No. 12 of 1993)

Local Government (Planning and Development) Act, 1998 (No. 9 of 1998)

Local Government (Planning and Development) Act, 1999 (No. 17 of 1999)

Planning and Development Regulations

European Communities (Environmental Impact Assessment) Regulations, 1989 (S.I. No. 349 of 1989)

European Communities (Environmental Impact Assessment) (Amendment) Regulations, 1994. (S.I. 84 of 1994)

Local Government (Planning and Development) Regulations, 1994 (S.I. No. 86 of 1994)

Local Government (Planning and Development) Regulations, 1995 (S.I. No. 69 of 1995)

Local Government (Planning and Development) Regulations, 1995 (S.I. No. 75 of 1995)

Local Government (Planning and Development) Regulations, 1996 (S.I. No. 100 of 1996)

Local Government (Planning and Development) Regulations, 1996 (S.I. No. 101 of 1996)

Local Government (Planning and Development) Regulations, 1997 (S.I. No. 78 of 1997)

Local Government (Planning and Development) Regulations, (No.2) 1997 (S.I. No. 121 of 1997)

Local Government (Planning and Development) (No.3) Regulations, 1997 (S.I. No. 261 of 1997)

Local Government (Planning and Development) (Fees) (Amendment) Regulations 1998 (S.I. No. 119 of 1998)

Local Government (Planning and Development) Regulations, 1998 (S.I. No. 124 of 1998)

Local Government (Planning and Development) (fees) (Amendment) (No. 2) Regulations, 1998 (S.I. No. 128 of 1998)

Local Government (Planning and Development) (No. 2) Regulations, 1998 (S.I. No. 194 of 1998)

Local Government (Planning and Development) Regulations, 1999 (S.I. No. 92 of 1999)

European Communities (Environmental Impact Assessment) (Amendment) Regulations, 1999. (S.I. No. 93 of 1999)

Local Government (Planning and Development) (No.2) Regulations, 1999. (S.I. No. 431 of 1999)

Planning and Development General Policy Directives

Local Government (Planning and Development) General Policy Directive, 1982 (S.I. No. 264 of 1982)

Local Government (Planning and Development) General Policy Directive, 1998 (S.I. No. 193 of 1998)

Appendix D: Other Publications

Other publications dealing with planning statistics include:

- Planning Statistics Quarterly, (Department of the Environment
- Statistical Release - Planning Permissions (Quarterly), Central Statistics Office
- The Development Control System 1989 - A Survey of 1986 Applications and Development based on them in 1989 (with appendix), ERU, 1990
- Inventory of Environmental Impact Statements submitted (Annual publication) Department of the Environment.
- Environment Bulletin (Quarterly), Department of the Environment
- An Bord Pleanála Annual Report

The Planning and Development Bill, 1999 was signed into law on 28 August last. As such it is now enacted, and titled the Planning and Development Act, 2000 (No. 30 of 2000). However, the Act will not come into operation until a commencement order is signed by the Minister. Given its size, it is proposed to commence the Act in phases.